

862

DISTRIBUTION MANIFOLD
IN STAINLESS STEEL,
BILATERAL OUTLETS,
CENTRES DISTANCE
MM.50



SIZE	PRESSURE	CODE	PACKING
1" x 2	10bar/145psi	86201000250	6/96
1" x 3	10bar/145psi	86201000350	6/72
1" x 4	10bar/145psi	86201000450	6/24
1" x 5	10bar/145psi	86201000550	6/24
1" x 6	10bar/145psi	86201000650	6/24
1" x 7	10bar/145psi	86201000750	3/36
1" x 8	10bar/145psi	86201000850	3/12
1" x 9	10bar/145psi	86201000950	3/12
1" x 10	10bar/145psi	86201001050	3/12
1" x 11	10bar/145psi	86201001150	3/12
1" x 12	10bar/145psi	86201001250	3/12
1" x 13	10bar/145psi	86201001350	3/12

TECHNICAL SPECIFICATIONS

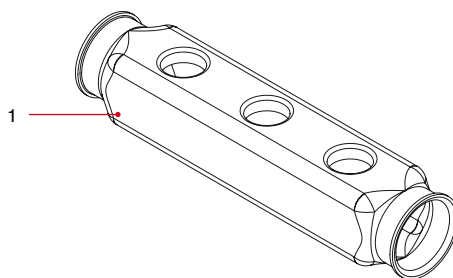
Manifolds in stainless steel AISI 304L with female outlets, suitable for fittings for copper, PEX, polybutylene or multilayer piping.

Maximum working temperature: 110°C.

Threads: ISO228 (equivalent to DIN EN ISO 228 and BS EN ISO 228).

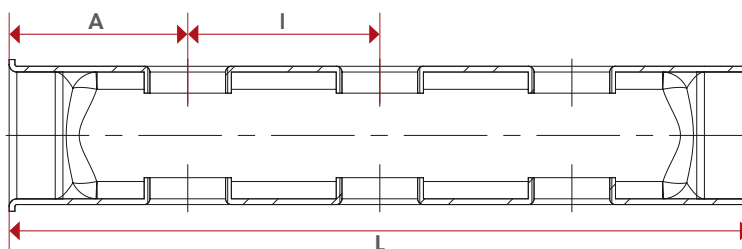
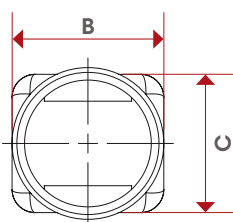
Size of the outlets: 1/2" F.

MATERIALS



POS.	DESCRIPTION	N.	MATERIAL
1	Body	1	Stainless steel AISI 304 L

OVERALL DIMENSIONS



I=50	1"
L-2+2	143
L-3+3	193
L-4+4	243
L-5+5	293
L-6+6	343
L-7+7	393
L-8+8	443
L-9+9	493
L-10+10	543
L-11+11	593
L-12+12	643
L-13+13	693
A	45
B	39,5
C	36
Kg/cm ² bar	10
LBS - psi	145

CERTIFICATIONS

